

# SANDLERSEATING

## ARIANE 1.1 HB - GENERAL SEATING COLLECTION

---



DESIGNER MARTIN BALLENDAT

### SPECIFICATION

Overall Height	120.8 cm	47.6"
Width	79.3 cm	31.2"
Overall Depth	81.4 cm	32"
Seat Height	47.3 cm	18.6"
Customer's own material	4.5 m	4.92 yds
Quantity / Carton	1	
Carton Volume	0.73 m <sup>3</sup>	1.61 lbs
Carton Weight	25 Kgs	55.12 lbs

### DESCRIPTION

Upholstered high-back lounge chair on a non-memory return swivel with a polished chrome finish or die cast aluminum black base. Either not tilt or tilt. Please note that COM/COL need pre-approval.

---

#### NORTH AMERICA

Sandler Seating Inc.  
1201 Peachtree Street NE  
Suite 1625 Atlanta  
GA 30361, USA

Call +1 404 982 9000  
Fax +1 404 321 7882

#### EUROPE

Sandler Seating Ltd.  
1A Fountayne Road  
London, N15 4QL  
United Kingdom

Call +44 (0)203 284 8000  
Fax +44 (0) 203 234 2999

#### ASIA

Sandler Seating Inc.  
60 Tannery Lane  
Singapore, 347803

# SANDLERSEATING

# ARIANE 1.1 HB - GENERAL SEATING COLLECTION

---

## FRAME FINISH OPTIONS

---

### CHROME (TILT)



Chrome Tilt

### CHROME NO TILT



Chrome No  
Tilt

### DIE CAST ALU BLACK (TILT)



Die Cast Alu  
Black (Tilt)

### DIE CAST ALUMINUM BLACK



die cast  
aluminum  
black

## SEAT FINISH OPTIONS

---

### CAMIRA CRAGGAN



Bracken  
ZAN03



Cairn  
ZAN02



Cave ZAN06



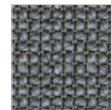
Fell ZAN01



Foss ZAN05



Gravel  
ZAN08



Marsh  
ZAN04



Millstone  
ZAN07



Scree  
ZAN10



Swale  
ZAN09

# ARIANE 1.1 HB - GENERAL SEATING COLLECTION

---

## RANGE

---



Ariane 1.1 LB



Ariane 1.2 WB



Ariane 1.2 HB



Ariane 1.2 LB



Ariane 1.1 WB



Ariane 1.1 HB

## ADDITIONAL IMAGES

---

