
camira

style with substance

www.camirafabrics.com

Gravity



Task seating



Cigarette & Match



Year guarantee

Gravity - Product information

Gravity adds weight to seating through its attractive, geometric lightly textured patterning. The fabric contains our innovative “closed loop” recycled polyester, which is derived from our own yarn and selvedge waste, upcycled into yarn, then dobby woven and piece dyed. The end result is an intriguing, two tone upholstery fabric with subtle surface interest, style and beautiful simplicity.

Contact

UK Head Office:	+44 (0)1924 490491
Germany:	+49 7031 60 84 30
Scandinavia:	+45 32 55 20 01
France/Benelux:	+32 56 227 266
USA:	+1 616 288 0655
China:	+86 (0) 21 6133 1812

www.camirafabrics.com



Technical information

UK

Composition
100% Polyester

Width
140cm minimum

Weight
295g/m² ±5% (415g/lin.m ±5%)

Abrasion Resistance
5 year guarantee / 80,000 Martindale cycles (full details available)

Flammability
BS EN 1021 - 1:2014 (cigarette)
BS EN 1021 - 2:2014 (match)
BS 7176:2007 Low Hazard
Note: Flammability performance is dependent on foam used.

Light Fastness
6 (ISO 105 - B02:2014)

Fastness to Rubbing
Wet: 4, Dry: 4 (ISO 105 - X12:2002)

Cleaning
Washable to 60°C. Wipe clean with a damp cloth or shampoo using proprietary upholstery shampoo.

Please note that seam performance is dependent on seam construction and needle and thread type. We recommend that appropriate sewing advice be taken.

Note: Batch to batch variations in shade may occur within commercial tolerances. We reserve the right to alter technical specifications without notice. The Unregistered Design Rights and the Copyright in all designs are the exclusive property of Camira Fabrics Limited.

D

Zusammensetzung
100% Polyester

Breite
140cm nutzbare Breite

Gewicht
295g/m² ±5% (415g/ldf.M ±5%)

Scheuerfestigkeit
5 Jahre Garantie / 80,000 Martindale Scheuertouren (Details auf Anfrage)

Feuersicherung
BS EN 1021 - 1:2014 (Zigarettestest)
BS EN 1021 - 2:2014 (Streichholztest)
BS 7176:2007 Low Hazard
Bemerkung: Schwerentflammbarkeit hängt von verwendetem Schaum ab.

Lichtechtheit
6 (ISO 105 - B02:2014)

Reibecktheit
Nass: 4, Trocken: 4 (ISO 105 - X12:2002)

Reinigung
Waschbar bis 60°C. Regelmässig staubsaugen. Dazu mit einem feuchten Tuch abwischen, oder mit einem speziellen Polsterschaum behandeln.

Eine optimale Nahtausreissfestigkeit hängt von der Nahtfahne, der verwendeten Nadel und dem Näh-Garn ab. Wir empfehlen daher Nähversuche durchzuführen.

Wichtig: Handelsübliche Farbabweichungen können auftreten und berechtigen nicht zur Reklamation. Wir behalten uns die Änderung technischer Spezifikationen vor. Die registrierten und nicht registrierten Urheberrechte der Dessinierungen sind ausschliessliches Eigentum der Camira Fabrics Limited.

F

Composition
100% Polyester

Largeur
140cm minimum

Poids
295g/m² ±5% (415g/m.l ±5%)

Résistance à l'abrasion
Garantie de 5 ans / 80,000 Martindale tours (renseignements complémentaires disponibles)

Flammabilité
BS EN 1021 - 1:2014 (cigarette)
BS EN 1021 - 2:2014 (allumette)
BS 7176:2007 Low Hazard
Notez: Réaction au feu dépend de la mousse utilisée.

Solidité à la lumière
6 (ISO 105 - B02:2014)

Solidité au Frottement
Mouillé: 4, Sec: 4 (ISO 105 - X12:2002)

Nettoyage
Lavable jusqu'à 60°C. Aspirer régulièrement. Essuyer avec une étoffe humide ou nettoyer à l'aide d'un produit approprié pour tissus d'ameublement.

Veuillez noter que la performance du joint dépend de sa construction ainsi que de l'aiguille et du type de fil utilisés.

Remarque: une variation de couleurs peut provenir (commerciallement tolérable). Nous réservons le droit de changer les spécifications techniques sans préavis. Les Droits de Conception non-enregistrés et les droits d'auteur de tous les motifs sont la propriété exclusives de Camira Fabrics Limited.

ES

Composición
100% Poliéster

Ancho
140cm mínimo

Peso
295g/m² ±5% (415g/lin.m ±5%)

Resistencia a la abrasión
Garantía de uso 5 años / 80,000 Martindale ciclos (más información disponible bajo consulta)

Inflamabilidad
BS EN 1021 - 1:2014 (cigarillo)
BS EN 1021 - 2:2014 (cerilla)
BS 7176:2007 Low Hazard
Condiciones ignifugas dependientes del tipo de foam utilizado.

Solidez a la luz
6 (ISO 105 - B02:2014)

Solidez al rozamiento
Húmedo: 4, Seco: 4 (ISO 105 - X12:2002)

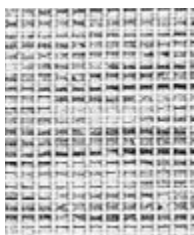
Limpieza
Lavable hasta 60°C. Limpiar con aspiradora frecuentemente. Bien lavar con un paño húmedo o con un champú apropiado para tapicería.

Tenga en cuenta que el rendimiento de la costura depende de la construcción de la costura, además de la aguja y del tipo de rosca. Le recomendamos que se aconsejen para coser la costura.

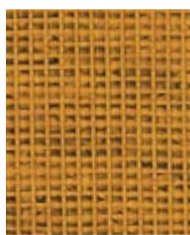
Nota: las variaciones de lote a lote en la sombra se puede producir dentro de tolerancias comerciales. Nos reservamos el derecho a efectuar modificaciones técnicas sin previo aviso. Los derechos sobre los diseños no registrados y los derechos de autor en todos los diseños son propiedad exclusiva de Camira Fabrics Limited.

Gravity

www.camirafabrics.com/samples



Frost
CPC32



Sunny
CPC20



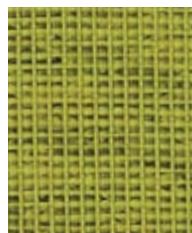
Almond
CPC10



Wheat
CPC21



Mustard
CPC14



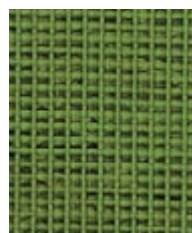
Gooseberry
CPC07



Nutmeg
CPC12



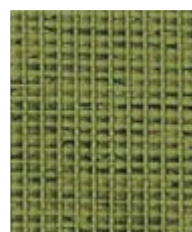
Copper
CPC22



Fresh
CPC23



Tigerlilly
CPC11



Evergreen
CPC08



Chocolate
CPC24



Rose
CPC13



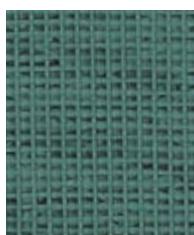
Tulip
CPC25



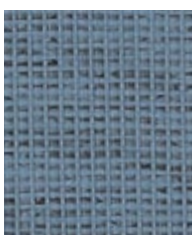
Military
CPC26

Note:

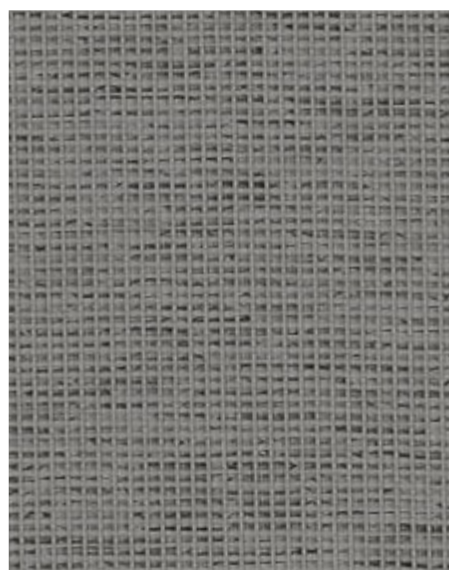
Photographic fabric scans are not colour accurate. Always request actual fabric samples before ordering.



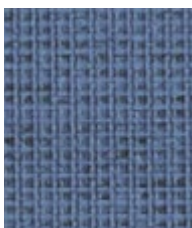
Lake
CPC09



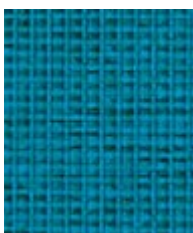
Frozen
CPC27



Dove
CPC17



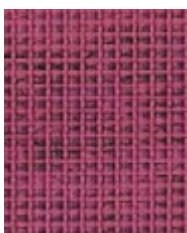
Dewdrop
CPC05



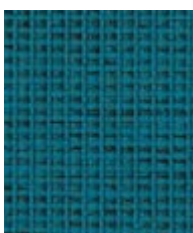
Aqua
CPC28



Ice
CPC15



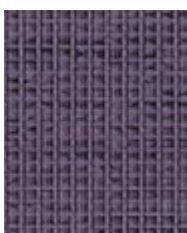
Petal
CPC01



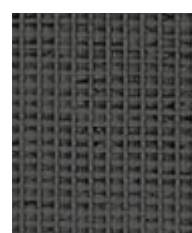
Botanic
CPC06



Brook
CPC04



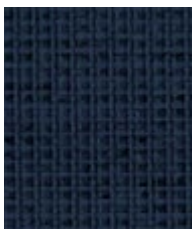
Lavender
CPC02



Slate
CPC16



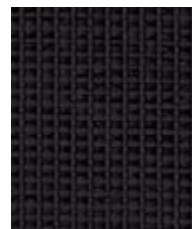
Lagoon
CPC29



Navy Blue
CPC30



Berry
CPC03



Black
CPC31