

---

**camira**

style with substance

---

[www.camirafabrics.com](http://www.camirafabrics.com)

# Main Line Flax

---



Task seating



Soft seating



Cigarette & Match



Medium Hazard



Environmental



Year guarantee

---

## Product information

Main Line Flax is the natural progression of our all-time favourite Main Line Plus fabric, building on our industry leading bast fibre expertise to create a new inherently flame retardant fabric from sustainable sources. A symbol of purity, wild flax has been used in textiles for thousands of years thanks to its strong, long and smooth fibres found inside the stem of the plant. The fibre is spun into a 70-30 wool flax blend, then dyed to create beautiful mixture yarns which are woven into interesting solids and cross-colours inspired by the rich tones of rare jewels.



UK/16/005

## Contact

UK Head Office:	+44 (0)1924 490491
Germany:	+49 7031 60 84 30
Scandinavia:	+45 32 55 20 01
France/Benelux:	+32 56 227 266
USA:	+1 616 288 0655
China:	+86 (0) 21 6133 1812

[www.camirafabrics.com](http://www.camirafabrics.com)



## Technical information

### UK

**Composition**  
70% Virgin Wool,  
30% Flax

**Environmental**  
Rapidly renewable and compostable.

**Width**  
140cm minimum

**Weight**  
435g/m<sup>2</sup> ±5% (610g/lin.m ±5%)

**Abrasion Resistance**  
5 year guarantee / 50,000 Martindale cycles (full details available)

### Flammability

BS EN 1021 - 1:2014 (cigarette)  
BS EN 1021 - 2:2014 (match)  
BS 7176:2007 Low Hazard  
BS 5852:2006 Section 4 Ignition Source 5  
BS 7176:2007 Medium Hazard  
BS 5867-2: Type B  
*Note: Flammability performance is dependent on foam used.*

**Light Fastness**  
5 (ISO 105 - B02:2014)

**Fastness to Rubbing**  
Wet: 3, Dry: 4 (ISO 105 - X12:2002)

### Cleaning

Vacuum regularly. Professionally dry clean or wipe clean with a damp cloth.

**Note:** Batch to batch variations in shade may occur within commercial tolerances. We reserve the right to alter technical specifications without notice. The Unregistered Design Rights and the Copyright in all designs are the exclusive property of Camira Fabrics Limited.

### D

**Zusammensetzung**  
70% Schurwolle,  
30% Flachs

**Umweltfreundlich**  
Schnell erneuerbar und kompostierbar.

**Breite**  
140cm nutzbare Breite

**Gewicht**  
435g/m<sup>2</sup> ±5% (610g/lfd.M ±5%)

**Scheuerfestigkeit**  
5 Jahre Garantie / 50,000 Martindale Scheuertouren (Details auf Anfrage)

### Feuersicherung

BS EN 1021 - 1:2014 (Zigarettestest)  
BS EN 1021 - 2:2014 (Streichholztest)  
BS 7176:2007 Low Hazard  
BS 5852:2006 Section 4 Ignition Source 5  
BS 7176:2007 Medium Hazard  
BS 5867-2: Type B  
*Bemerkung: Schwerentflammbarkeit hängt von verwendetem Schaum ab.*

**Lichtechtheit**  
5 (ISO 105 - B02:2014)

**Reibechtheit**  
Nass: 3, Trocken: 4 (ISO 105 - X12:2002)

### Reinigung

Regelmässig absaugen. Professionelle Trockenreinigung. Alternativ dazu mit einem feuchten Tuch abwischen.

**Wichtig:** Handelsübliche Farbabweichungen können auftreten und berechtigen nicht zur Reklamation. Wir behalten uns die Änderung technischer Spezifikationen vor. Die registrierten und nicht registrierten Urheberrechte der Dessinierungen sind ausschliessliches Eigentum der Camira Fabrics Limited.

### F

**Composition**  
70% Laine Vierge,  
30% Lin

**Écologique**  
Rapidement renouvelable et compostable.

**Largeur**  
140cm minimum

**Poids**  
435g/m<sup>2</sup> ±5% (610g/m.l ±5%)

**Résistance à l'abrasion**  
Garantie de 5 ans / 50,000 Martindale tours (renseignements complémentaires disponibles)

### Flammabilité

BS EN 1021 - 1:2014 (cigarette)  
BS EN 1021 - 2:2014 (allumette)  
BS 7176:2007 Low Hazard  
BS 5852:2006 Section 4 Ignition Source 5  
BS 7176:2007 Medium Hazard  
BS 5867-2: Type B  
*Notez: Réaction au feu dépend de la mousse utilisée.*

**Solidité à la lumière**  
5 (ISO 105 - B02:2014)

**Solidité au Frottement**  
Mouillé: 3, Sec: 4 (ISO 105 - X12:2002)

### Nettoyage

Aspirer régulièrement. Nettoyage à sec professionnel. Autrement, essayer avec un tissu humide.

**Remarque:** une variation de couleurs peut provenir (commerciallement tolérable). Nous réservons le droit de changer les spécifications techniques sans préavis. Les Droits de Conception non-enregistrés et les droits d'auteur de tous les motifs sont la propriété exclusive de Camira Fabrics Limited.

### ES

**Composición**  
70% Lana Virgen,  
30% Lino

**Ambiental**  
Rapidamente renovable y compostable.

**Ancho**  
140cm mínimo

**Peso**  
435g/m<sup>2</sup> ±5% (610g/lin.m ±5%)

**Resistencia a la abrasión**  
Garantía de uso 5 años / 50,000 Martindale ciclos (más información disponible bajo consulta)

### Inflamabilidad

BS EN 1021 - 1:2014 (cigarillo)  
BS EN 1021 - 2:2014 (cerilla)  
BS 7176:2007 Low Hazard  
BS 5852:2006 Section 4 Ignition Source 5  
BS 7176:2007 Medium Hazard  
BS 5867-2: Type B  
*Condiciones ignifugas dependientes del tipo de foam utilizado.*

**Solidez a la luz**  
5 (ISO 105 - B02:2014)

**Solidez al rozamiento**  
Húmedo: 3, Seco: 4 (ISO 105 - X12:2002)

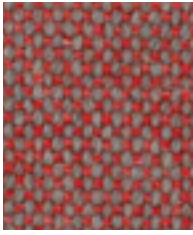
### Limpieza

Limpiar con aspirador con regularidad. Limpiar en seco, o bien lavar con un paño húmedo.

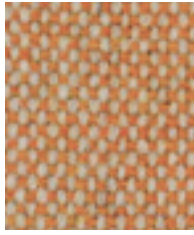
**Nota:** las variaciones de lote a lote en la sombra se puede producir dentro de tolerancias comerciales. Nos reservamos el derecho a efectuar modificaciones técnicas sin previo aviso. Los derechos sobre los diseños no registrados y los derechos de autor en todos los diseños son propiedad exclusiva de Camira Fabrics Limited.

**Main Line Flax**

[www.camirafabrics.com/samples](http://www.camirafabrics.com/samples)



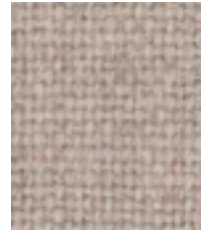
**Barbican**  
MLF03



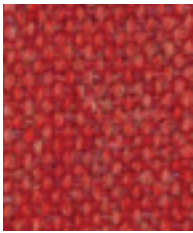
**Lambeth**  
MLF08



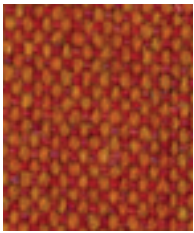
**Kensington**  
MLF07



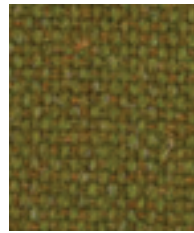
**Upminster**  
MLF20



**Aldgate**  
MLF01



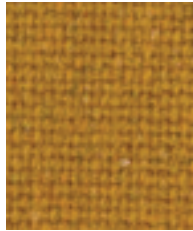
**Leyton**  
MLF13



**Finsbury**  
MLF30



**Kilburn**  
MLF06



**Tooting**  
MLF17



**Goldhawk**  
MLF31



**Archway**  
MLF02



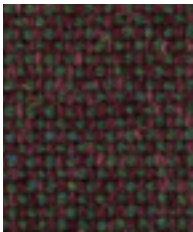
**Parsons**  
MLF14



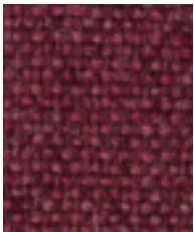
**Mordon**  
MLF12



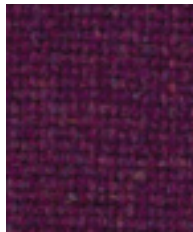
**Camden**  
MLF26



**Paddington**  
MLF39



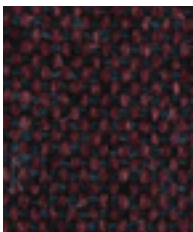
**Wembley**  
MLF11



**Euston**  
MLF04



**Bank**  
MLF23



**Northfields**  
MLF40



**Hillingdon**  
MLF41



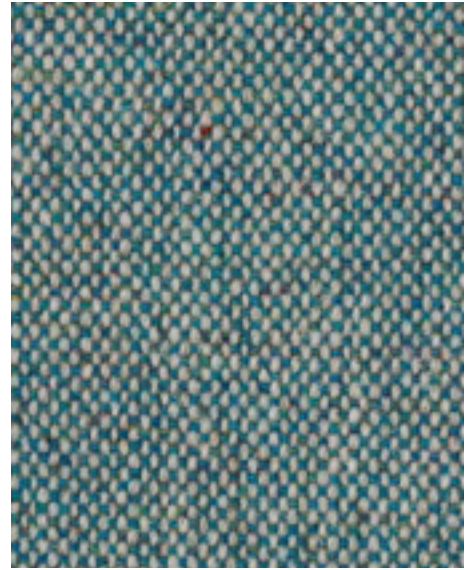
**Stockwell**  
MLF15

**Note:**

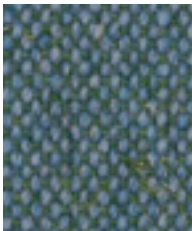
Photographic fabric scans are not colour accurate. Always request actual fabric samples before ordering.



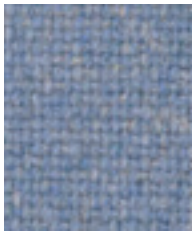
**Newbury**  
MLF10



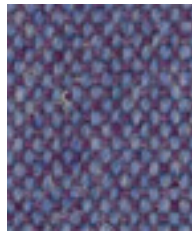
**Bayswater**  
MLF24



**Bethnal**  
MLF25



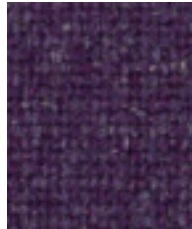
**Waterloo**  
MLF21



**Charing**  
MLF27



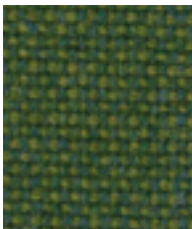
**Monument**  
MLF09



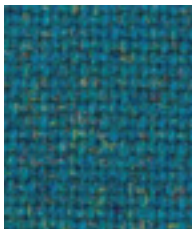
**Highgate**  
MLF33



**Westminster**  
MLF22



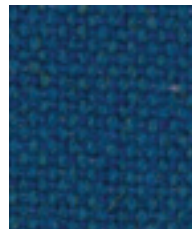
**Tufnell**  
MLF18



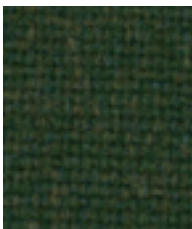
**Stanmore**  
MLF37



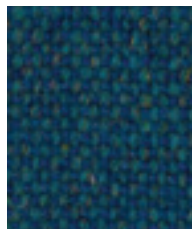
**Russell**  
MLF38



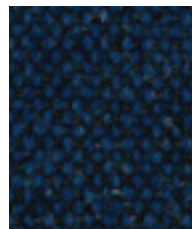
**Holborn**  
MLF05



**Farringdon**  
MLF29



**Pimlico**  
MLF34



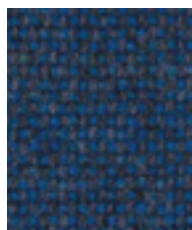
**Victoria**  
MLF19



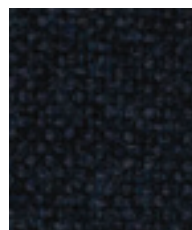
**Temple**  
MLF16



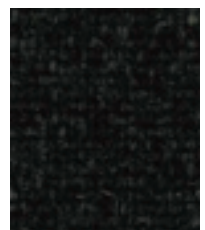
**Greenford**  
MLF32



**Brompton**  
MLF35



**Tower**  
MLF36



**Edgware**  
MLF28