

UNI

# SANDLERSEATING

---

# UNI

CATALOG

**metalmobil**



SANDLERSEATING

UNI

CATALOG



ART. 572-P  
Chair  
White polypropylene shell 4 legs,  
steel frame painted in RAL 9010 white.

ART. 572-P  
Chair with 4 legs steel frame.

5



ART. 572-P  
Chair with 4 legs steel frame.



Stackable **8**  
Weight **4,6 Kg**  
Packaging **0,32 m<sup>3</sup>**  
Pieces per box **5**





ART. 572-P  
Chair  
Mocha polypropylene shell,  
4 legs chrome steel frame.

VILLA I TRAMONTI RESTAURANT  
SALUDECIO (ITALY)







# UNI

Bike path and pedestrian walkway "Umberto Cardinali" donated by IFI to the city of Pesaro for the 100th birthday of its first president.

**ART. 573-P**

Armchair with 4 legs steel frame.



ART. 573-P ☀



Stackable **4**  
Weight **5,5 Kg**  
Packaging **0,37 m<sup>3</sup>**  
Pieces per box **4**





**ART. 573-P**

Armchair

White and anthracite polypropylene shell,  
4 legs painted in aluminum + transparent  
coating.

**ART. 558-5P-N**

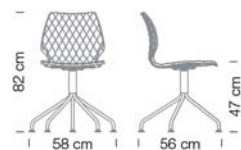
Swivel chair with 5 ways steel frame.

**ART. 558-5R-N**

Swivel chair on 5 ways steel frame with castors.

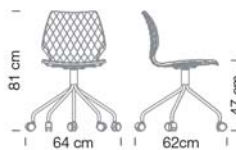


**ART. 558-5P-N** 360°



Weight **6,90 Kg**  
Packaging **0,37 m<sup>3</sup>**  
Pieces per box **2**

**ART. 558-5R-N** 360°



Weight **7 Kg**  
Packaging **0,37 m<sup>3</sup>**  
Pieces per box **2**

ART. 574-P  
Chair with steel sled frame.



ART. 574-P ☀



Stackable 4  
Weight 6,3 Kg  
Packaging 0,38 m<sup>3</sup>  
Pieces per box 4



UNIM



**ART. 560-N**

Chair with central steel base  
and kick-back device.



ART. 560-N 



Weight **14 Kg**  
Packaging **0,23 m<sup>3</sup>**  
Pieces per box **1**

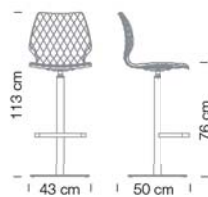


ART. 380-P  
Barstool with central steel base  
and kick-back device.

ART. 379-P  
Barstool with 4 legs steel frame.



ART. 380-P 



Weight 17 Kg  
Packaging 0,27 m<sup>3</sup>  
Pieces per box 1

ART. 379-P 



Stackable 4  
Weight 6,8 Kg  
Packaging 0,47 m<sup>3</sup>  
Pieces per box 4



UNI



ART. 553-P

Chair with steel wire frame.



ART. 553-P ☀



Weight 5 Kg

Packaging 0,28 m<sup>3</sup>

Pieces per box 2





ART. 553-P  
Chair  
Black polypropylene seat, chrome steel wire frame.



ART. 562-N

Chair

Mocha polypropylene shell, 4 legs  
maple stained beech wood frame.

ART. 562-N

Chair with 4 legs wooden frame.

23



ART. 562-N



Weight 4,5 Kg

Packaging 0,26 m<sup>3</sup>

Pieces per box 2





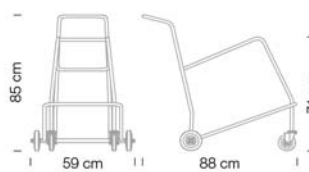


UNII

ART. 584  
Steel trolley (painted black).



ART. 584



Weight **3,1 Kg**  
Packaging **0,47 m<sup>3</sup>**  
Pieces per box **1**







The background features a complex, three-dimensional white texture that resembles a woven or braided fabric. The texture is composed of numerous overlapping, curved strands that create a sense of depth and movement. The lighting is dramatic, with bright highlights on the raised surfaces and deep shadows in the recesses, giving the texture a tactile quality. The overall composition is abstract and modern.

# **FINISHES**



**WHITE**



**TURTLE DOVE**



**MOCHA**



**BLACK**



**BOSS GREEN**



**ANTHRACITE**

**FIRE-RESISTANT COLORS (BOSTON FIRE CODE)**



**MOCHA**



**BLACK**



**WHITE**



**TURTLE DOVE**



**FRAME FINISHES**

---



**VR WHITE RAL 9010**



**VR GRAY RAL 7042**



**VR ORANGE RAL 2003**



**VR ANTHRACITE RAL 7016**



**VR PELTRO**



**VR BLACK RAL 9005**



**VR IVORY RAL 9001**



**VR GREEN 367 C**



**VR RED RAL 3000**



**VR BROWN RAL 8017**



**CR CHROME**



**CR S MATT CHROME**



**VR ALUMINUM GRAY**

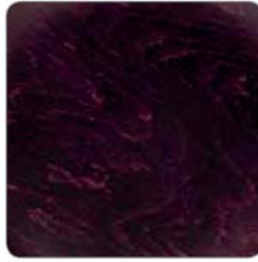




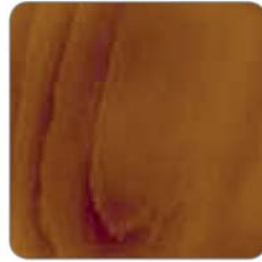
MAPLE STAIN BEECH



NATURAL BEECH



WENGE STAIN BEECH



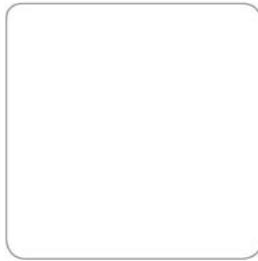
LIGHT WALNUT STAIN BEECH



WALNUT STAIN BEECH



BLACK STAIN BEECH



CUSTOM STAINED

Art Direction  
**studiopieri** communication & graphic design

Metalmobil Marketing Department

Photo  
**Amati Bacciardi**

**Metalmobil Archivio/ARCHIVE**  
pag. 13-30/31-36/37-44/45

Metalmobil reserves the right to make modifications on any products shown in this catalogue at any time and without prior notice.

The finishes reproduced in this catalogue are indicative due to the inevitable variations in printing processes.

METALMOBIL È UNA DIVISIONE DI  
is a division of / est une division de  
ist eine Abteilung von / es una división de

**IFI S.p.A.**  
Strada Selva Grossa, 28/30 - 61010 Tavullia (PU) - Italy

© Copyright IFI S.p.A. Tavullia (PU) - Italia, 05/2013  
TUTTI I DIRITTI RISERVATI  
All rights reserved / Tous droits réservés /  
Alle Rechte vorbehalten / Todos los derechos reservados

I PRODOTTI POSSONO ESSERE TUTELATI  
DA BREVETTO E/O DA DESIGN

Products may be protected by patent and/or design  
Les produits peuvent être protégés par brevet et/ou sur leur design  
Die Produkte können vom Patent und/oder Design geschützt sein  
Los productos pueden ser protegidos por patente y por diseño

# SANDLERSEATING

[www.sandlerseating.com](http://www.sandlerseating.com)  
[sales@sandlerseating.com](mailto:sales@sandlerseating.com)

**SANDLER SEATING LTD**  
1A FOUNTAYNE ROAD  
LONDON N15 4QL  
UK

tel: +44 203 284 8000  
fax: +44 203 234 2999

**SANDLER SEATING INC**  
1175 PEACHTREE STREET NE  
SUITE 1850  
ATLANTA GA  
30361  
US

tel: +1 404 982 9000  
fax: +1 404 321 7882

## metalmobil®

**Metalmobil**  
Strada Selva Grossa, 28/30 - 61010 Tavullia (PU) - Italy  
Italia: Tel. +39 0721 203607 - Fax +39 0721 203606  
Export: Tel. +39 0721 203601 - Fax +39 0721 203600  
commerciale@metalmobil.com - export@metalmobil.com  
[www.metalmobil.com](http://www.metalmobil.com)



100%  
Da foreste correttamente gestite  
From well-managed forests

**ADIMEMBER**

**INDUSTRIEIFI**



**CISQ**



**UNI**