

Bisque



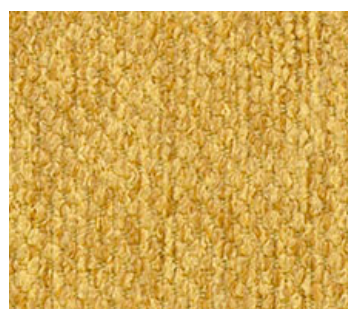
Hemp



Pumice



Desert



Gilded



Sage



Refresh



Moon



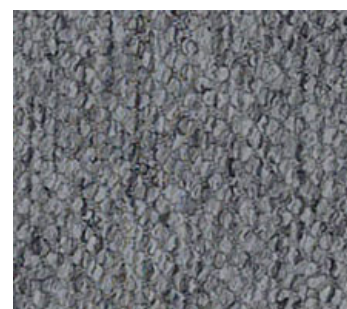
Copper



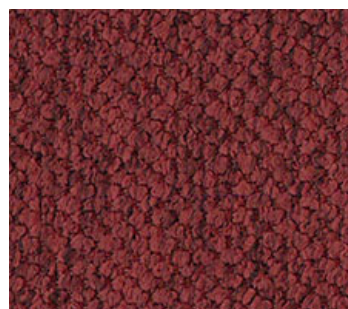
Peridot



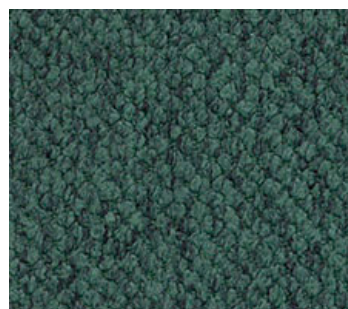
Rain



Mercury



Garnet



Emerald



Caribe



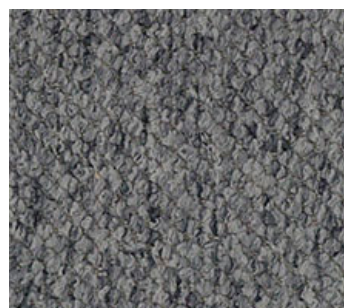
Nordic



Violet



Driftwood




Pewter



Charcoal

Deka

Application:	Upholstery, Panel
Content:	63% Post Consumer Recycled Polyester, 37% Polyester
Backing:	Acrylic
Finish:	PFAS-Free Stain Resistant
Flame Resistance:	CA 117 2013, UFAC Class I, NFPA 260 Class I; With proper components, compatible with CA 133;ASTM E84
Durability:	200,000 double rubs*
Maintenance:	WS - Water-based cleaning agents or foam
Width:	56"
Repeat:	-
Shown Railroaded:	No
Lightfastness:	Class 4, 40 hours
Weight:	0 .88 lbs.
	
©2022	

Visit momentumtextilesandwalls.com to view full pattern repeat and complete specs

Multiple factors affect fabric durability and appearance retention, including end-user application and proper maintenance.

* Abrasion test results exceeding ACT Performance Guidelines are not an indicator of product lifespan.

REDUCED ENVIRONMENTAL IMPACT:

- GREENGUARD certified
- Meets or exceeds ACT Sustainability Standard NSF/ANSI 336 compliance requirements
- Recycled fiber content

